

Third Series Vol. XI Part 1

No. 229

Spring 2015

ISSN 0010-003X

Price £12.00

THE COAT OF ARMS

an heraldic journal published twice yearly by The Heraldry Society



THE COAT OF ARMS

The journal of the Heraldry Society



Third series

Volume XI

2015

Part 1

Number 229 in the original series started in 1952

The Coat of Arms is published twice a year by The Heraldry Society, whose registered office is 53 Hitchin Street, Baldock, Hertfordshire SG7 6AQ. The Society was registered in England in 1956 as registered charity no. 241456.

Founding Editor

†John Brooke-Little, C.V.O., M.A., F.H.S.

Honorary Editors

C. E. A. Cheesman, M.A., PH.D., F.S.A., Richmond Herald

M. P. D. O'Donoghue, M.A., F.S.A., York Herald

Reviews Editor

Tom O'Donnell, M.A., M.PHIL.

Editorial Committee

Adrian Ailes, M.A., D.PHIL., F.S.A., F.H.S.

Jackson W. Armstrong, B.A., M.PHIL., PH.D.

Noel Cox, LL.M., M.THEOL., PH.D., M.A., F.R.HIST.S.

Andrew Hanham, B.A., PH.D., F.R.HIST.S.

Jun.-Prof. Dr Torsten Hiltmann

Advertizing Manager

John Tunesi of Liongam

www.the-coat-of-arms.co.uk

ARTEFACTS OF INTEREST

Reported under the Portable Antiquities Scheme and the Treasure Act

A further short selection of small finds of heraldic or related interest recently reported under the terms of the Treasure Act 1996 or the Portable Antiquities Scheme. All the objects were found by metal-detectorists; all have a unique PAS number. Objects submitted to H.M. Coroner as potential treasure have a T number prefixed by the year in which they were submitted.



Figure 1: 2014.01, a lead badge found at Cheriton in Hampshire. Scale 1:1.

2014.01 HAMPSHIRE: CHERITON

PAS HAMP-FO41E0. See **Figure 1**.

A post-medieval circular lead badge depicting a buckled strap bearing the motto STAT PRO[M]ISSA FIDES, with the end of the strap hanging below, around a crest consisting of a winged demi-angel on a crest wreath, holding in the right hand a beaked griffin's head erased. The reverse is flat and plain with a large integral peg for attachment (diameter c.5mm). The badge is highly detailed and in a fairly good condition, with some damage to the border making the MI of the motto illegible. Dimensions of face top to bottom 51.5mm, side to side 42.68mm; thickness of badge (excluding the peg behind) 6.59mm; weight 49.06g. Late 16th or 17th century.

The crest and motto are those of Leslie, Lord Lindores, a title created in 1600 for Patrick Leslie, second son of the 5th Earl of Rothes, and extinct on the death of the eighth lord in 1813. Elizabeth Roads, Lyon Clerk and Keeper of the Records for Lyon Court, has commented 'In a Scottish context a clansman's badge shows the chiefly crest within a strap and buckle bearing his motto and in times past this format would have been used by household servants and other followers too of a landed person, so I have little doubt this was intended to reflect an adherent to the Lords Lindores'.

Joanna Cole

ARTEFACTS OF INTEREST



Figure 2: 2015.02, a post-medieval seal matrix from Midhurst in Hampshire. Scale 1½:1.

2015.02 HAMPSHIRE: MIDHURST

PAS HAMP-83B34B. See **Figure 2**.

Post-medieval copper-alloy seal matrix with an oval face on a rounded knop and an ornate openwork handle, formed by scrolled edges supporting a pierced lozenge for suspension. The seal design shows an *acartocciato* shield bearing three arrows or crossbow bolts in bend sinister (seen in bend on the matrix), points downwards, below a crown or coronet of unidentified nature. Height of handle 27.25mm; dimensions of face 19.14mm x 16.07mm; weight 6.22g. Possibly 17th or 18th century. Found December 2014.

The arms have not been identified and the design may be pseudo-heraldic; if heraldic, it may be European rather than British although there are (non-heraldic) signets with handles of similar form in the PAS database at SF-E96797 (Shotley, Suff.), BH-344CA1 (Sharnbrook, Beds.) and elsewhere.

Katie Hinds

2015.03 HEREFORDSHIRE: MADLEY

PAS HESH-24A9AE. See **Figure 3**, over.

An incomplete medieval lead-alloy seal matrix. The face of the die is roughly oval. The reverse rises and tapers to form the handle, hexagonal in section and now largely broken off but probably originally terminating in a perforated loop. Each of the hexagonal sides is decorated by a vertical line of dots that descends the mid point of each panel. The die face depicts a central 'heater' shaped shield within a tracery surround formed by of arches being six broad sub-triangular lobes. This design is then enclosed by a single incised oval border that follows the external edge of the die. Within the tracery are single letters although these are mostly lost due to abrasion and corrosion; what remains reads TE / V [M?] / ... / VE / ... /. The shield is roughly engraved but appears to be *Quarterly indented throughout with a mullet of six points in the canton*. The matrix is of a mid greenish grey colour with an even but abraded patina. There are also areas of light grey corrosion, mostly on the edges of the matrix where abrasion and chipping caused by movement in the plough soil is most evident. From the size, inscription and the image it depicts, it was most likely to be a private personal seal—probably a counter-seal—although not of the highest calibre of workmanship.

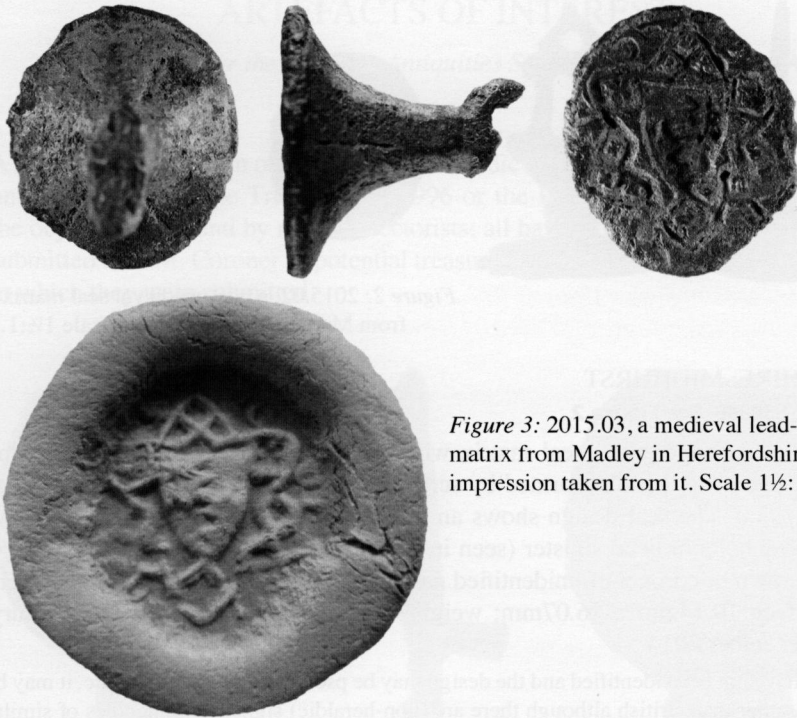


Figure 3: 2015.03, a medieval lead-alloy seal matrix from Madley in Herefordshire, with an impression taken from it. Scale 1½:1.

Dimensions of face 20.6mm x 17.9mm; remaining height of handle 19.1mm; weight 7.8g. Dated by style c. 1250-1400.

DBA records *Qtly per fess indented a mullet in the canton* for Richard de Acton (cf. *BM Seals* 6765, 6766: later 13th and 14th centuries) and also for William Fitz Warin, presumably a cadet of the family of Fulk Fitz Warin whose seal, found at Little Bedwyn, Wilts., was reported here in the last number (2014.17 = PAS BERK-FDCFD2). There may have been a tendency in such designs for the paler line to become indented too; *DBA* lists cases of *Qtly indented throughout* for both Acton and Fitz Warin, though without the mullet. Herefordshire is not an unsuitable findspot for an object associated with the Fitz Warins (their bases being Shropshire and Gloucestershire) but too much weight should not be placed on this.

Peter Reavill*

2015.04 KENT: CANTERBURY

PAS KENT-CEABE7. See **Figure 4**.

A medieval cast copper-alloy seal matrix with a circular die and a conical reverse, hexagonal in section, forming a handle terminating in a trefoil loop. The face of the die shows a shield with a saltire and an uncertain charge in chief. The inscription in a border around the edge of the shield appears to read S' WILLELMI [.] BRVSTOW.

* With thanks to John Cherry and Clive Cheesman for input and comments.

ARTEFACTS OF INTEREST



Figure 4: 2015.04, a medieval lead-alloy seal from Canterbury. Scale 2:1.

Diameter of face of die 24.66mm; height of handle 31.1mm; weight 22.52g. Dated by style 1250-1400.

The arms have not been identified and do not resemble those known to have been borne by families called Burstow, Bristow or similar, in the medieval period or later. The bend-sinister portion of the saltire may be formed by two lines. The possibility that this is an episcopal or abbatial shield with a sword or other item along one diagonal interlacing two keys along the other (as in the arms ascribed at different periods the bishopric and abbey of Bath and the bishopric of Winchester) has been considered, as have alternative identifications for the charge in chief such as a mitre. However the seal does not resemble a bishop's or abbot's seal.

Jennifer Jackson

2015.05 SHROPSHIRE: BRIDGNORTH

PAS WMID-E44AD7. See **Figure 5**, over.

A medieval copper-alloy harness pendant, circular in form with an integral suspension loop. The pendant was apparently gilded. The front bears the forequarters of a winged monster of some sort, possibly a dragon or wyvern, turned to the right but regardant. There is a plain circular border around the design. The reverse is plain and undecorated. The object is gold and brown in colour and shows possible evidence of green and black enamel on the front surface, while the reverse is a dark green to brown in colour. The patina is uneven. Abrasion caused by movement whilst within the plough soil may have resulted in the loss of some of the original surface detail. Diameter 24.7mm; length of suspension loop 11mm; thickness 2.0mm; weight 4.8g. Dated stylistically to 1200-1400. Found 25 January 2015.

Pendants of this sort are relatively rare. Examples in the PAS database include WILT-1ED6E5 and HAMP-9A300B. It is quite likely that the monster is not a heraldic reference but possibly apotropaic or simply decorative.

Helen Glenn

THE COAT OF ARMS



Figure 5: 2014.05, a medieval harness pendant from Bridgnorth in Shropshire, bearing a winged monster. Scale 2:1.

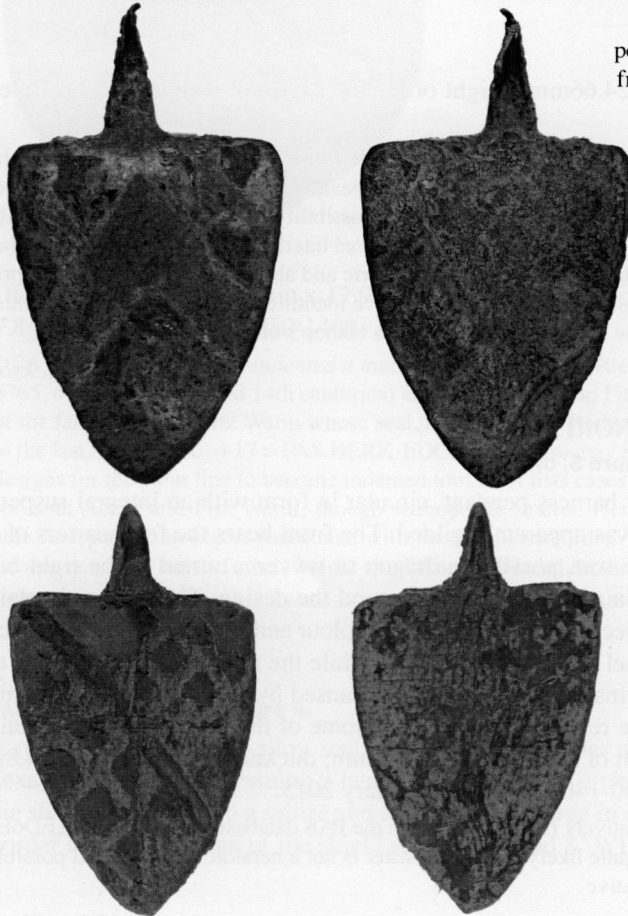


Figure 6: medieval harness pendants. Above (a), 2015.06, from Mavesyn Ridware, Staffordshire., showing unknown arms. Below (b), 2015.07, from Holt in Worcestershire, showing the arms of Despenser. Both shown at scale 1½:1.

2014.06 STAFFORDSHIRE: MAVESYN RIDWARE

PAS WMID-1D41BA. See **Figure 6a**.

A medieval copper-alloy harness pendant in the form of a 'heater' shaped shield with an integral suspension loop in the centre of the top edge. The design is a chevron between three charges, apparently martlets or possibly some other bird; the field of the shield displays red enamel. Where there is no enamel surviving the surface of the pendant has acquired a green colouring. Dimensions of shield 31.9mm x 24.3mm; thickness 3.7 mm; suspension loop 4.9mm across; weight 7.3g. Dated stylistically 1350-1450.

On the basis of fifteenth-century sources *DBA* 2, p. 158, ascribes *Gules a chevron between three martlets argent* to the name Walkington or Walkenton. Walkington is a parish and manor in E. R. Yorks. but a family of this name held land at Bredicot in Worcestershire in the fourteenth century (*VCH Worcs* 3, pp. 277-8). However the birds may not be martlets; an alternative possibility is that they are popinjays or parrots.

Helen Glenn

2015.07 WORCESTERSHIRE: HOLT

PAS WMID-A8450A. See **Figure 6b**.

A medieval copper-alloy shield-shaped harness pendant with integral suspension loop at centre top. The shield is 'heater' shaped and has a heraldic design on the face, specifically a quartered field with a fretty pattern on a red field in the second and third quarters and a black bendlet over all. The red enamel in the second and third quarters survives well. Dimensions of shield 28.4mm x 21.5mm; outer diameter of suspension loop 5.6mm; thickness of shield 2.1mm; weight 5.6g. Dated by style 1250-1350. Found 23 November 2014.

The pendant clearly shows the arms of the Despenser family. For such pendants see now J. H. Baker in this journal, p. 7 above, with references to sources on the arms. Baker proposes that the manufacture of such items is likely to predate the fall of the family from power in 1326. There is unlikely to be any significance in the specific findspot; Holt was a Beauchamp holding throughout the relevant period.

Teresa Gilmore