

## ARTEFACTS OF INTEREST

### *Reported under the Portable Antiquities Scheme and the Treasure Act*

A further short selection of small finds of heraldic or related interest recently reported under the terms of the Treasure Act 1996 or the Portable Antiquities Scheme. All were found by metal detectorists and have a unique PAS number. Objects submitted to H.M. Coroner as potential treasure have a T number prefixed by the year in which they were submitted. Norfolk objects also have a Norfolk Historic Environment Record (NHER) number.

#### 2020.01 BERKSHIRE: LECKHAMPSTEAD

BERK-81C04D. See **Figure 1**.

An incomplete medieval, copper-alloy shield-shaped harness pendant, the suspension loop broken off. The face of the shield displays impaled arms, *Azure semy-de-lys or* in the dexter and impaling *Gules semy of castles or* in the sinister. Traces of gilding are evident on the fleurs-de-lys, the castles and the right edge of the pendant. The upper side of the sinister half is damaged and the decoration is missing. The reverse is plain and has a dark green patina. Thirteenth century. Length 25.4mm; width at top 20mm; thickness 2mm; weight 3.42g. Found 12 May 2019.

The arms, essentially France impaling Castile, are those of Alphonse, Count of Poitiers and Toulouse (d. 1271), sometime Regent of France and a crusader, younger son of Louis VIII and brother of (St) Louis IX: see for instance Walford's Roll (*Aspilogia* 2, p. 172). For the arms of thirteenth-century Continental princes and potentates on harness pendants found in England see J. H. Baker, 'The earliest armorial harness pendants', *CoA* 3rd series 11 (2015), pp. 1–24 at 10–11.<sup>1</sup>

*Helena Costas*



*Figure 1:* Medieval copper-alloy armorial harness pendant from Leckhampstead in Berkshire. 2020.01.

<sup>1</sup> With thanks to Steven Ashley, Sir John Baker and in particular Adrian Ailes for the identification.

2020.02 CORNWALL: BODMIN

CORN-2B76F7. See **Figures 2a and 2b.**

Fragment of an enamelled copper-alloy heraldic quatrefoil mount, probably from a chest or casket. The mount is decorated on the front face with a central shield, apparently divided *per fess* with two or three arrows fesswise in base; the chief appears to show two rows of miniature shields (a total of six visible) each with a rounded knob like a pendant and each containing a leopard's head. The field of the entire mount is subdivided by tracery and cross-hatched or scored for enamelling; some light green enamel survives on the complete lobe and around the miniature shields and there are patches of red enamel around the arrows. There is a central rivet hole, 5 mm in diameter, in the middle of the mount. Fourteenth century. Length 72 mm; width: 42 mm; thickness 2.75 mm; weight: 23.6 g. Found 1 May 2019.



Left, *Figure 2a*: Fragmentary medieval copper-alloy heraldic mount from Bodmin in Cornwall. 2020.02. Right, *Figure 2b*: Drawing of 2020.02 with outline of missing parts. Drawing by George Scott.

For mounts of this sort cf. B. Read, *Metal artefacts of antiquity: A catalogue of small finds from specific areas of the United Kingdom* (Langport 2001), p. 16. The arms are difficult to interpret and identify, especially the pattern in the chief. The best possibility (suggested by Steven Ashley) is *Per fess the chief paillé with two arrows fesswise in base*; for *paillé* see T. R. Davies, 'As it was in the Beginning', *CoA* n.s. 3 (1979), no. 109, pp. 114–24 at 123, with illustration of a very similar form of field pattern.

Anna Tyacke

## ARTEFACTS



Figure 3: Medieval copper-alloy armorial mount from Bacton in Norfolk. 2020.03.

### 2020.03 NORFOLK: BACTON

NMS-0909C5. NHER 33275. See **Figure 3**.

Medieval copper-alloy shield-shaped mount with inlaid enamel decoration showing a cross moline on a field divided *per pale*. All gilding or white-metal coating has been lost along with almost all the enamel; small discoloured traces remain. Oblique scoring for missing enamel can be seen in the sinister field. There is a large drilled and probably secondary perforation between the arms of the cross in dexter chief. Thirteenth to fourteenth century. Length 57.5mm; width 47.5mm; thickness 3.5mm; weight 42.07g. Found October 2019.

The arms are *Per pale [or and vert] a cross moline [gules]*, probably for Ingham; cf. J. Corder, *A Dictionary of Suffolk Arms* (Suffolk Rec. Soc. 7: Ipswich 1965), cols 260–1 and *DBA* 3, pp. 139–40.

Steven Ashley

### 2020.04 NORFOLK: BRESSINGHAM

NMS-629FE8. NHER 41868. See **Figure 4**.

Incomplete, worn and corroded medieval shield-shaped copper-alloy armorial horse harness pendant. The point of the shield is bent back onto the reverse and the suspension loop broken across perforation. Much red enamel survives, but the surface treatment of metal is missing. Late thirteenth to fourteenth century. Width 25.5mm; extant height (unbent) 42mm. Found March 2018.

The arms are those of Hastings (*Or a maunch gules*) or de Tony (*Argent a maunch gules*); see J. Corder, *A Dictionary of Suffolk Arms* (Suffolk Rec. Soc. 7: Ipswich 1965), col. 403.

Steven Ashley

## THE COAT OF ARMS



Figure 4: Bent medieval copper-alloy armorial pendant from Bressingham in Norfolk. 2020.04.

### 2020.05 NORFOLK: GREAT ELLINGHAM

NMS-174109. NHER 57316. See **Figure 5**.

About one half of a circular medieval gilt copper-alloy seal matrix, flat, with a chamfered edge on the reverse, an old break with recent scuffing. The front part of a knight on horseback, galloping to the right. Only the tensed straight right leg of the knight survives, projecting at an angle with the foot in the stirrup. The trapper of the horse bears armorial decoration of large quatrefoils. The head of the horse is covered with a shaffron or hood with pelleted fretty diapering. Under the horse is a small wyvern. The surviving legend reads ]SIGILL' BALDEWIN[ ('Seal of Baldwin .....'). Thirteenth century. Diameter 29mm; thickness 2.9mm; weight 5.60g. Found March 2017.

The quatrefoils on the trapper are presumably abstracted from a shield, and may represent any number from a single one to *Semy of quatrefoils*.

*Steven Ashley*

### 2020.06 NORFOLK: KEMPSTONE

NMS-39B911. NHER 24181. See **Figure 6**.

Incomplete and unusual medieval gilt sheet copper-alloy circular pendant or medallion. One face has engraved and counter-relief decoration comprising the head, torso and right arm of a mailed knight facing right. Part of the figure's left arm and head are missing where cut off by the curve of the mount. The right arm is held at a slightly oblique angle behind him and he holds a vertical sword in his right hand, with an irregular break where the upper part is missing. Above the outstretched arm are three oblique ribs forming a zig-zag and a vertical rib behind the head, and below the arm is a scrolling tail-like element. Engraved lines and pecking retain gilding, now standing proud of the decayed surface, and indicate a mail hauberk with hood or *coif-de-mailles*. The decoration stands proud of a recessed field. That on the other face is a worn, corroded and now obscure



## ARTEFACTS



*Figure 5, top left:* Fragmentary medieval gilt copper-alloy seal matrix from Great Ellingham in Norfolk. 2020.05. Top right: impression taken from the seal. Bottom: drawing of the seal impression by Steven Ashley.

## THE COAT OF ARMS



Figure 6: Fragmentary medieval gilt sheet copper-alloy pendant or medallion from Kempstone in Norfolk. 2020.06.

interlaced arrangement of broad oblique bars of differing widths in relief on a recessed field within a narrow-raised border. Perhaps to be dated between *c.* 1150 and *c.* 1220 (see discussion below). Diameter 35mm; thickness 1.5mm; weight 5.67g. Found March 2019.

The posture of the knight is paralleled on equestrian seals of the mid-twelfth and thirteenth centuries, such as that of Roger de Mowbray, dated *c.* 1155 (P. D. A. Harvey and A. McGuinness, *A Guide to British Medieval Seals* (London 1996), p. 47 fig. 41), providing a *terminus post quem*. By the early thirteenth century the *coif-de-mailles* would have been obscured by a cylindrical helmet, providing an approximate *terminus ante quem*.

Steven Ashley

### 2020.07 NORFOLK: MAUTBY

NMS-BF4181. NHER 34669. See **Figure 7**.

Incomplete medieval copper-alloy harness fitting, shield-shaped with a straight break on one side, probably part of a rotating vertical 'banner', and a vertical split across a secondary rectangular perforation (evidence of re-use) near the upper edge. One face has worn decoration with traces of possible black enamel: [*Or/Argent*] *crusilly fitchy a lion rampant to sinister sable*, the other face with worn traces of similar decoration with the lion facing the other way (both lions face the missing upright). Late thirteenth to fourteenth centuries. Extant height 30mm; extant width 25.5mm; thickness 3mm. Found October/November 2018.

For banner-form fittings like this see N. Griffiths, *Horse Harness Pendants* (Finds Research Group 700–1700 Datasheet 5, 1986), fig. 25. The arms are likely to be those of Breuse: *Or crusilly a lion rampant queue forchy sable* (and related variant blazons): *DBA* 1, p. 180; J. Corder, *A Dictionary of Suffolk Arms* (Suffolk Rec. Soc. 7: Ipswich 1965), col. 43.

## ARTEFACTS



Figure 7: Broken medieval copper-alloy armorial harness fitting from Mautby in Norfolk. 2020.07.

Steven Ashley

### 2020.08 NORFOLK: MORNINGTHORPE

NMS-EC5CE5. NHER 14317. See **Figure 8**.

Medieval copper-alloy (with a high lead content) wheel pommel from a sword, Ward-Perkins Type VIII. Decorated on both faces with a recessed cross with expanded terminals (cross paty), containing decayed traces of probable enamel. Thirteenth to fourteenth centuries. Diameter or width 42mm; length 38mm; thickness 25mm. Upper aperture 10.5 x 6mm; lower aperture 17 x 9mm; weight 140.93g. Found October 2018.

For the typology of sword pommels by J. B. Ward-Perkins see *London Museum: Medieval Catalogue* (London 1940), pp. 21–38. The *cross paty* or *formy* is perhaps to be associated with the military orders of Knights Templar and Hospitaller.

Steven Ashley

### 2020.09 NORTHAMPTONSHIRE: ABTHORPE

NARC-FBC935. 2019 T761. See **Figure 9**.

Post-medieval gold signet ring with an oval-faced bezel engraved with a shield within a border of punched dots. The shield bears the arms *On a chevron between three goat's heads erased three escallops*; there is a crescent in chief for difference. The chevron is dotted or pitted but no other hatching is visible on the shield. The band of the ring is slightly squashed. There is no maker's mark or hallmark. Late sixteenth or seventeenth century. Diameter of ring 25.11mm; width of bezel 15.03mm; weight 7.5g.

The pitting on the chevron would not appear to be conventional hatching, since *Argent on a chevron between three goat's heads erased sable three escallops* or are the arms of a Northamptonshire family of Benson: see G. Baker, *History of the County of*

# THE COAT OF ARMS



*Figure 8: Medieval copper-alloy and lead sword pommel from Morningthorpe in Norfolk. 2020.09. Drawing by J. Gibbons.*



## ARTEFACTS

*Northampton* vol. 1 (1822–30), p. 296. George Benson (d. 1643) leased Thorney Manor in Charwelton, Northants., later purchased by his nephew Henry (d. 1663), high sheriff of the county in 1658 and 1659. The latter was a second son; his younger brother George (d. 1688) was of Towcester, four miles to the east of Abthorpe, and left descendants.

*Eleanore Cox and Clive Cheesman*



*Figure 9:* Post-medieval gold signet ring from Abthorpe in Northamptonshire. 2020.9.

## THE COAT OF ARMS

### 2020.10 SOMERSET: ASH PRIORS

SOM-CD370C. See **Figure 10**.

Fragment of a post-medieval silver heraldic decoration, probably from a livery harness. The artefact is formed of a moulded thin silver front filled with a lead backing. Within the lead there appear to be two or three small circular rivets, possibly iron, that project slightly from the lead surface at the top and down one arm. The shield is impaled for a married couple and shows stippling which may be conventional hatching. Probably nineteenth century. Dimensions of surviving part 41.5mm x 40.7mm; maximum thickness 4.4mm (5.6mm including the rivet); weight 11.91g. Found between 1 Jan. and 30 Oct. 2016.

If the stippling of the field on the dexter side is the conventional hatching for *or*, the husband's arms may be those of Bampfylde: *Or on a bend gules three mullets argent*. The wife's arms have not been identified: they appear to be *Or two towers in chief and in base a pair of clasped hands*. A branch of the Bampfylde family lived at Hestercombe House, not far from the findspot, from 1718 onwards, although after the death of Coplestone Warre Bampfylde in 1791 the estate passed out of the male line. No relevant Bampfylde marriage in the eighteenth or nineteenth century has yet been identified.

*Laura Burnett*



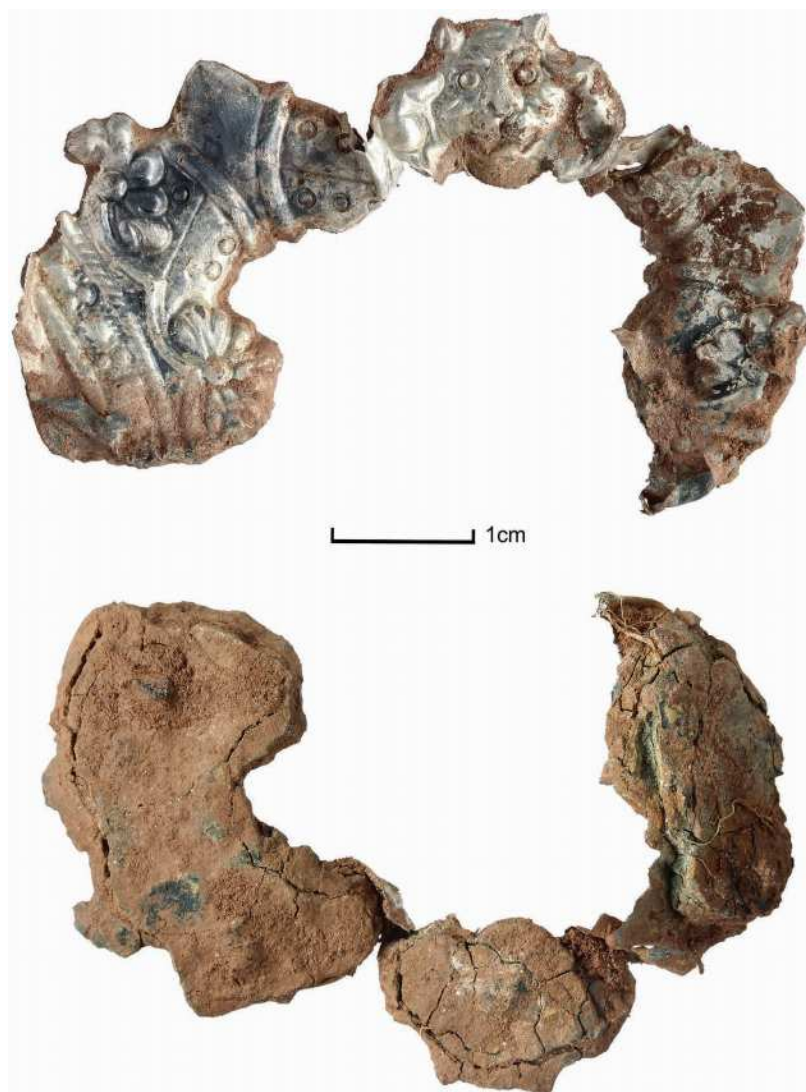
*Figure 10:* Modern (probably nineteenth-century) silver heraldic decoration from Ash Priors in Somerset. 2020.10.

## ARTEFACTS

### 2020.11 SOMERSET: CHEDDON FITZPAINE

SOM-631F02. See **Figure 11**.

Fragment of a post-medieval silver heraldic decoration, probably from a livery harness. The object is formed of a moulded thin silver front filled with a lead backing, and shows part of a crest apparently consisting of two embowed arms in armour holding a lion's face. Probably nineteenth century. Dimensions of surviving part 37.8 by 38.7mm; maximum thickness 9.0mm; weight 52.64g. Found between 1 April and 10 Aug. 2019.



*Figure 11:* Fragmentary modern (probably nineteenth-century) silver heraldic decoration from Cheddon Fitzpaine in Somerset. 2020.11.

## THE COAT OF ARMS

*Two arms in armour embowed holding in the hands a leopard's head (i.e. a lion's face) is the secondary crest of the Lethbridge family of the nearby estate of Sandhill Park. It is possible that the object originally showed the full coat of arms, though another option might be the two crests side by side, as seen on some Lethbridge family silverware (e.g. [www.bada.org/object/pair-george-ii-double-lipped-sauce-boat](http://www.bada.org/object/pair-george-ii-double-lipped-sauce-boat)).*

*Laura Burnett*



*Figure 12: Post-medieval silver seal matrix from Bradfield in South Yorkshire. 2020.12.*



## 2020.12 SOUTH YORKSHIRE: BRADFIELD

SWYOR-A893B7. 2019 T472. See **Figure 12**.

An incomplete post-medieval silver seal matrix, the handle conical and unfaceted, the oval face showing a coat of arms within a beaded border. The shield shows three fleurs-de-lys with a mullet in chief, presumably for difference; the crest, on a helmet with full mantling, is a fleur-de-lys with a snake disposed horizontally behind it. Seventeenth century. Height 10.08mm; dimensions of face 18.98mm x 17.11mm; weight 7.01g Found 4 May 2019.

The coat of arms is probably that of the Birch family of Birch in Manchester: *Azure three fleurs-de-lys argent* with a crest *A fleur-de-lys argent environed by a serpent proper*. For a pedigree of the family see J. Booker, *The History of the Ancient Chapel of Birch, in Manchester Parish* (Chetham Soc. vol. 47: Manchester 1859) The snake in the crest is usually shown wrapped or entwined several times around the fleur-de-lys, with head much higher than the tail. However a seal used in 1668 by Col. Thomas Birche of this family (a prominent parliamentary soldier, on whom see the entry by D. Whitehead in *Oxford DNB*), with quartered arms, shows the snake twisted just once around the fleur-de-lys and with head and tail on the same level as each other: see **Figure 13**. The version on the present seal could easily derive from a misreading of this or a similar depiction. The mullet should indicate a third son: Col. Birche's third son was Matthew Birch, a barrister of Gray's Inn, born *c.* 1637, but there are various other candidates. None has an obvious connection with the findspot or any other reason to be preferred.

*Amy Downes*

**The Heraldry Society** is an educational charity. Its purpose is to promote greater understanding and appreciation of heraldry and its related subjects. The society organises lectures, study days, congresses, dinners and other social activities. It offers a course in heraldry leading to examination for a diploma. It publishes a range of source material at modest cost. Members receive the *Coat of Arms* and the quarterly *Heraldry Gazette*.

Help to support our work and participate in our social activities by joining today via our website [www.theheraldrysociety.com](http://www.theheraldrysociety.com)

*Registered office*

53 Hitchin Street, Baldock, Hertfordshire SG7 6AQ

The Society was registered in England in 1956 as registered charity no. 241456.

*The Coat of Arms* is a non commercial, non profit making academic journal. Advertising space is sold in order to subsidise the cost of printing. The contents of this journal will be made freely available to all online via the Heraldry Society website one year following distribution of paper copy to members. Images may be subject to copyright, and should not be reproduced without permission of the originator.

*President*

His Grace The Duke of Norfolk, Earl Marshal

*Honorary Secretary*

John Tunesi of Liongam

e-mail: [honsecheraldrysociety@googlegmail.com](mailto:honsecheraldrysociety@googlegmail.com)

*Membership Secretary*

Jane Tunesi of Liongam

e-mail: [membership@theheraldrysociety.com](mailto:membership@theheraldrysociety.com)

Material appearing in *The Coat of Arms* does not necessarily represent the views of the Honorary Editor, of the Editorial Panel, or of the Society.

Printed in Bristol by 4Word Ltd.

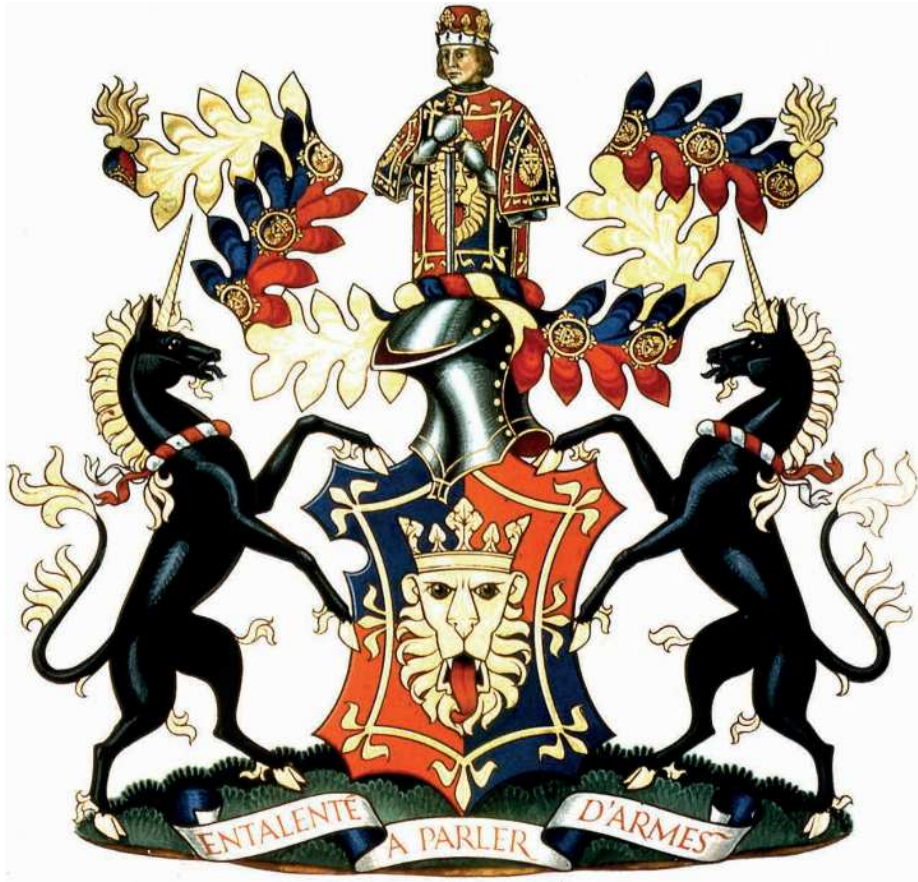
©The Heraldry Society

ISSN 0010-003X

ISSN 2634-1182 Online version

# THE COAT OF ARMS

*The journal of the Heraldry Society*



Fourth Series

Volume III

**2020**

Number 237 in the original series started in 1952